

CLPA continues to ramp up support for TSN with new development options

10 January 2023

The development ecosystem for Time-Sensitive Networking (TSN) technology is expanding further, thanks to a range of new solutions to deliver CC-Link IE TSN compatible products. Developed by CC-Link Partner Association (CLPA) members, the growing number of hardware and software options available highlights the increasing market demand for CC-Link IE TSN.

Since pioneering the world's first open gigabit industrial Ethernet with TSN functions, CC-Link IE TSN, the CLPA has been actively expanding the ecosystem of development options available to create industrial automation devices compatible with the technology. As a result, there are now 10 solutions from 8 companies on hand that vendors can leverage. These include both hardware and software technologies for master and device stations.

More precisely, the offering includes software development kits with TSN stacks from Mitsubishi Electric, port industrial automation GmbH and SILA. These represent portable, cost- and time-effective tools for automation vendors to provide TSN functions with existing products.

When looking at hardware solutions, it is possible to benefit from high-performance yet economical Application Specific Integrated Circuits (ASICs). Also referred to as dedicated communication Large Scale Integration (LSI), these development options

are available from Mitsubishi Electric and Renesas/IAR. Additionally, HMS offers easy to integrate and flexible solutions with embedded modules.

Automation vendors looking for development tools that support customisable designs can leverage Field Programmable Gate Arrays (FPGAs) from Lattice Semiconductor. Finally, a powerful microcontroller/microprocessor solution is part of NXP's portfolio.

In addition to these existing solutions, the CLPA is continually working with leading companies in the industry to grow the number and diversity of options available.

This growth has been driven by demand from end users and machine builders looking to create smart facilities and an increasing number of automation vendors interested in including compatible products in their portfolio. In effect, TSN is an enabler for Industry 4.0, as it delivers network convergence, which is key for providing the transparency required.

Therefore, the integration of this network technology into industrial automation devices is becoming increasingly important to drive the competitiveness of vendors, machine builders and end users. John Browett, General Manager of CLPA Europe, says: "The ability to effectively share large volumes of different types of data is at the core of futureproof Industry 4.0 setups. CC-Link IE TSN has quickly emerged as the leading network technology in the industrial communications space that can deliver this.

"As more and more development options are being rolled out by our partners, it will become even easier to release compatible devices. This, in turn, will streamline and support their implementation on shop floors, leaving end users and machine builders confident that they can advance the productivity of their facilities and operations with a single network solution."

Image captions:

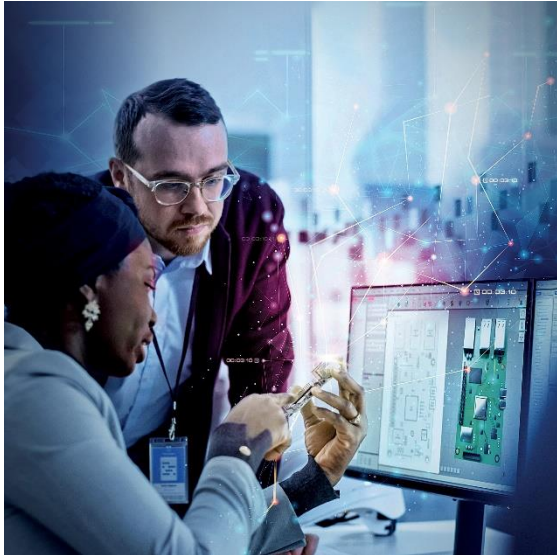


Image 1: The Time Sensitive Networking (TSN) development ecosystem is growing with a number of new solutions to provide CC Link IE TSN compatible products

The image(s) distributed with this press release are for Editorial use only and are subject to copyright. The image(s) may only be used to accompany the press release mentioned here, no other use is permitted.

About The CC-Link Partner Association (CLPA)

The CLPA is an international organization founded in 2000, now celebrating its 20th Anniversary. Over the last 20 years, the CLPA has been dedicated to the technical development and promotion of the CC-Link open industrial network family. The CLPA's key technology is CC-Link IE TSN, the world's first open industrial Ethernet to combine gigabit bandwidth with Time-Sensitive Networking (TSN), making it the leading solution for Industry 4.0 applications. Currently the CLPA has over 4,100 corporate members worldwide, and more than 2,000 compatible products available from over 370 manufacturers. Around 38 million devices using CLPA technology are in use worldwide.

Further Information:

Website: eu.cc-link.org

LinkedIn: <https://www.linkedin.com/company/cc-link-partner-association-europe/>

Twitter: twitter.com/cc_linknews

YouTube: youtube.com/user/CLPAEurope

Press contact:

CC-Link Partner Association Europe

John Browett

General Manager

Tel.: +44 (0) 7768 338708

john.browett@eu.cc-link.org

PR agency:

DMA Europa

Anne-Marie Howe

Progress House, Great Western Avenue, Worcester,

WR5 1AQ, UK

Tel.: +44 (0) 1905 917477

anne-marie.howe@markettechgroup.com

news.dmaeuropa.com